



Features for Microsoft Dynamics GP

"Our mission is to empower every person and every organization on the planet to achieve more."

Microsoft Dynamics GP 18.8 October 2025



© 2025 Microsoft Corporation. All rights reserved. Last modified: September 30, 2025

Microsoft Proprietary and Confidential Information

This training package content is proprietary and confidential and is intended only for users described in the training materials. Some elements of this document are subject to change. This document is for informational purposes only. MICROSOFT MAKES NO WARRANTIES, EXPRESS OR IMPLIED, IN THIS SUMMARY.

This content and information is provided to you under a Non-Disclosure Agreement and cannot be distributed. Copying or disclosing all or any portion of the content and/or information included in this package is strictly prohibited. Complying with all applicable copyright laws is the responsibility of the user. Without limiting the rights under copyright, no part of this document may be reproduced, stored in, or introduced into a retrieval system, or transmitted in any form or by any means (electronic, mechanical, photocopying, recording, or otherwise), or for any purpose, without the express written permission of Microsoft Corporation.

Microsoft may have patents, patent applications, trademarks, copyrights, or other intellectual property rights covering subject matter in this document. Except as expressly provided in any written license agreement from Microsoft, the furnishing of this document does not give you any license to these patents, trademarks, copyrights, or other intellectual property.

The example companies, organizations, products, domain names, e-mail addresses, logos, people, places, and events depicted herein are fictitious. No association with any real company, organization, product, domain name, e-mail address, logo, person, place, or event is intended or should be inferred.

The names of actual companies and products mentioned herein may be the trademarks of their respective owners.

Microsoft and the Microsoft products and services listed are either registered trademarks or trademarks of Microsoft Corporation in the United States and/or other countries.

Table of contents

- Microsoft Dynamics GP Features 1
- Microsoft Dynamics GP Lifecycle2
 - Lifecycle for Microsoft Dynamics GP.....2
 - System Requirements Updates5
 - Upgrading to Microsoft Dynamics GP 18.8.....5
- Features6
 - Critical System Enhancement.....6
 - Email Settings and Reporting Tools Setup - Power BI.....6
 - Sales Order Processing Required Field Message7
 - Payables Setup Vendor Class Roll Down.....8
 - Luxury Auto Depreciation Display and Edit.....9
 - Sales Order Batches Navigation List 11
 - VAT Enhancements to Submission process 13
 - Summary of all Table Changes in 18.8 14
 - Quality fixes in 18.8..... 14

Microsoft Dynamics GP Features



This course/module was created for Partners and Customers.



It will take approximately 60 minutes to train the features in Microsoft Dynamics GP.



The features for Microsoft Dynamics GP are built around:
Ease of Use - Customer Requests - Extend Functionality



After this course/module you will be able to:
Understand the Microsoft Dynamics GP Features.

Microsoft Dynamics GP Lifecycle

Lifecycle for Microsoft Dynamics GP

Understand the Lifecycle Policies for Dynamics GP:

[Software lifecycle policy - Dynamics GP | Microsoft Docs](#)

[What Does Modern Lifecycle mean for Dynamics GP?](#)

[Discontinuing support for Microsoft Dynamics GP](#)

[Announcing End of Support for Dynamics GP - Microsoft Dynamics 365 Blog](#)

Discontinuing support for Dynamics GP - Announced September 2024

As Microsoft continues focusing on innovation and investments in cloud solutions and technologies, we will end Dynamics GP support on December 31, 2029, for product enhancements, regulatory (tax) updates, and technical support. Security updates/patches, if needed, will be made available until April 30, 2031. As we expand investment in Dynamics 365 cloud solutions, customers and partners are encouraged to upgrade systems and software to work with Dynamics 365 cloud offerings, which provide superior security and business management features.

[June 2, 2025, Microsoft Announced End Dates for Subscription and SPLA for Dynamics GP and SL](#)

End of Life Timeline for Subscription and SPLA

April 30, 2031: End of Subscription Billing and use of product.

As previously announced:

December 31, 2029: End of product enhancements, regulatory (tax) updates, service packs and technical support.

April 30, 2031: End of security updates.

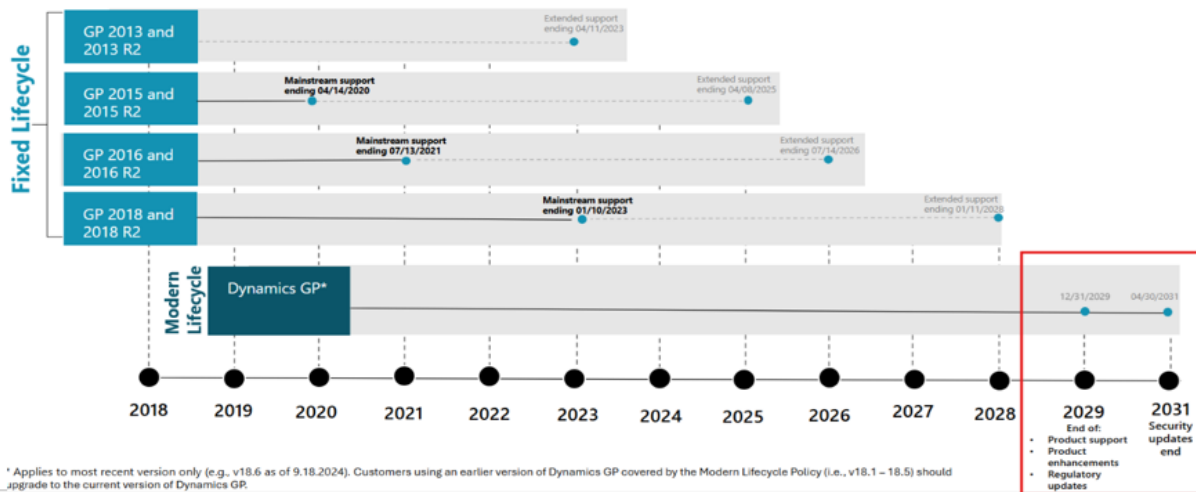
April 1, 2025: No new customers for GP perpetual licenses.

April 1, 2026: No new customers for GP subscription licenses.

Modern Lifecycle

Lifecycle page:
[Software lifecycle policy - Dynamics GP | Microsoft Docs](#)

Dynamics GP versions governed by Fixed and Modern Lifecycle



End of support announced for Dynamics GP

On September 25, 2024, Microsoft announced the timeline for ending support for Dynamics GP.



End of support announced for Dynamics GP Subscription & SPLA

On June 5, 2025, Microsoft announced the timeline for ending support for Dynamics GP Subscription & SPLA

GP and SL Product Availability Roadmap



System Requirements Updates

The following changes have been made to the Dynamics GP System Requirements for 18.8 release.

[Microsoft Dynamics GP System Requirements](#)

Here is a summary of the supported SQL versions based on Microsoft Dynamics GP version.

- GP 2013 supports SQL 2014, 2012 and 2008
- GP 2015 supports SQL 2014 and 2012
- GP 2016 supports SQL 2016, 2014 and 2012
- GP 2018 supports SQL 2017, 2016 and 2014
- GP 18.2 and later supports SQL 2019 plus SQL 2017, 2016 and 2014
- GP 18.5 & 18.6 supports SQL 2022, 2019, 2017 and 2016 (SQL 2014 dropped)
- GP 18.7 & 18.8 supports SQL 2022, 2019, 2017 (SQL 2016 dropped)

Upgrading to Microsoft Dynamics GP 18.8

[Upgrade Hot Topic](#)

The only supported upgrade path to the current release is from the release 1 year back from current in accordance with the [Modern Lifecycle](#) noted above.

[Microsoft Dynamics GP 2025 Upgrade Blog Series Schedule](#)



Note: As an example of a supported (tested by Microsoft) upgrade path to 18.8 (October 2025 Release) or 2025 Year-End would be from GP 18.6.1685 or later.

Features

Critical System Enhancement

While many system enhancements in Dynamics GP are not directly visible to users, they play a critical role in ensuring the platform remains secure, stable, and compatible with modern technologies. These critical enhancements are the invisible backbone of Dynamics GP.

The following items are now tested and compatibility with release 18.8 of Dynamics GP.

- TLS 1.3
- .NET Framework 4.7.2
- Visual Studio 2019

These foundational upgrades help future-proof Dynamics GP, reduce vulnerabilities, and improve overall system performance—even if users don't see the changes directly.

Email Settings and Reporting Tools Setup - Power BI

We're currently storing client secrets in plain text within SQL columns for features like the Web Client Graph email integration and Power BI reports. This poses a security risk. To address this, we need to update the Dynamics.dic file so that any sensitive data is automatically encrypted when saved and decrypted when accessed through the Dynamics interface. This change will help protect confidential information and align with best practices for data security.



Note: Due to the above noted change after the upgrade to 18.8, web client users will need to re-enter the key/secret on Company E-mail Setup and Reporting Tools Setup - Power BI.

Sales Order Processing Required Field Message

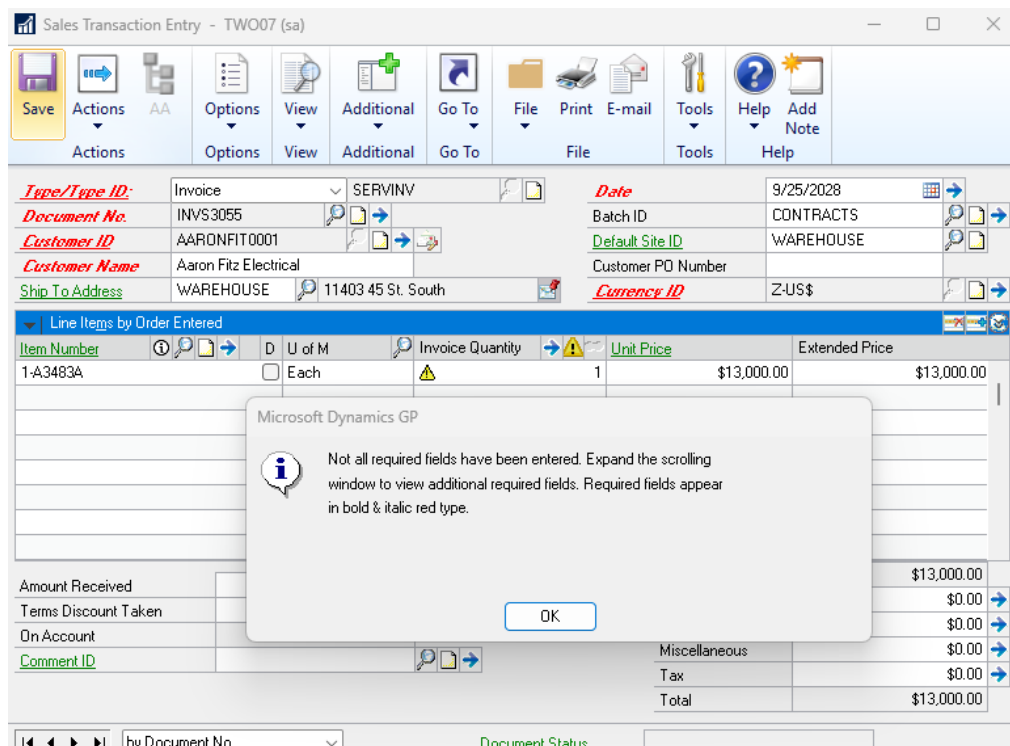
If you have ever used Dynamics GP, you know the pain. You are cruising along, entering data as a champ and then you are hit with the dreaded error message:

"Not all required fields have been entered"

You know your required fields are in bold and red. You know you filled them out, but I continually get this error message that I'm clearly doing something wrong.

It was a simple change, but highly requested one from our loyal Dynamics GP users. When you save a [Sales Order Processing document and you get the message that all required fields are not populated](#), information was added to the message to tell the user to expand the sales lines in order to populate the required fields such as Site ID and/or Price List.

By default, the Sales Transaction Entry scrolling window is collapsed. This can be found by going to Transactions, choosing Sales and selecting Sales Transaction Entry.



Payables Setup Vendor Class Roll Down

Expanding on a key enhancement [in Dynamics GP 18.7: Default Vendor Class Roll Down Now Defaults to "No"](#). In Dynamics GP 18.8 the system was enhanced around the area of the Vendor Class ID message setup. When you modify a Vendor Class ID in setup a message box pops up that states "Do you want to roll down these changes?" The message prompt will default to no.

When you choose Setup, click Purchasing and select Vendor Class

Vendor Class Setup - TWO07 (sa)

Class ID: AUS-NSW-C ☐ Default

Description: Australian Vendors-Cont. Serv.

Currency ID: Z-AUD

Rate Type ID:

Payment Terms: Net 30

Discount Grace Period:

Due Date Grace Period:

Payment Priority: 1

Minimum Order: \$11.00

Trade Discount:

One Payment Per:

Minimum Payment:

Maximum Invoice Amt:

Credit Limit:

Writeoff:

☒ Revalue Vendor

Maintain History:

☒ Calendar Year

☒ Fiscal Year

☒ Distribution

Tax Schedule: AUSNSWST+0

Shipping Method: GROUND

Checkbook ID:

Type:

User-Defined 2:

Tax Tune: Not a 1099 Vendor

Microsoft Dynamics GP

Do you want to roll down these changes?

by Class ID

Luxury Auto Depreciation Display and Edit

A common question we hear is: “Do I really need to install the year-end update for Dynamics GP?” The answer is a resounding yes—especially if your business relies on Fixed Assets.

With the evolving lifecycle of Dynamics GP, staying current isn’t just about compliance—it’s about extending the value and flexibility of your system. The new Luxury Auto Depreciation feature, introduced in Dynamics GP 18.8, is a prime example.

Each year, the IRS updates depreciation limits for luxury vehicles. Previously, keeping up with these changes required you to install the update each year. Now, with Dynamics GP 18.8 includes a dedicated table that automatically stores these values by year, giving you the ability to view, manage, and edit them as needed yourself.

This enhancement ensures your Fixed Assets module remains accurate and aligned with IRS regulations—saving time, reducing risk, and improving financial reporting. More importantly, it helps you future proof your investment in Dynamics GP, making it easier to adapt to regulatory updates.

If your business uses Fixed Assets, this updated release isn’t optional, it’s a strategic move to keep your system compliant, efficient, and ready for the future.

To access this new option, choose Tools, click Setup, choose Fixed Assets and then Luxury Depreciation

Asset Year	Luxury Depreciation Limit
First year tax with bonus depreciation	\$99,999.99
First year tax without bonus depreciation	\$9.99
Second tax year	\$77.77
Third tax year	\$6,666.55
Four - Six tax year	\$44.44

This new window was added to the Security task of ADMIN_FIN_FA01.

A new table was created in the system database FA03600, storing each year along with depreciation values.

When you upgrade to 18.8 values will be populated for years 2018-2024, but when you install the year end update (code release in November) if a year doesn't exist in the table, the year would be created, and the amounts would be added. Example: year-end update November 2025, would see that year 2025 doesn't exist so it will be added.

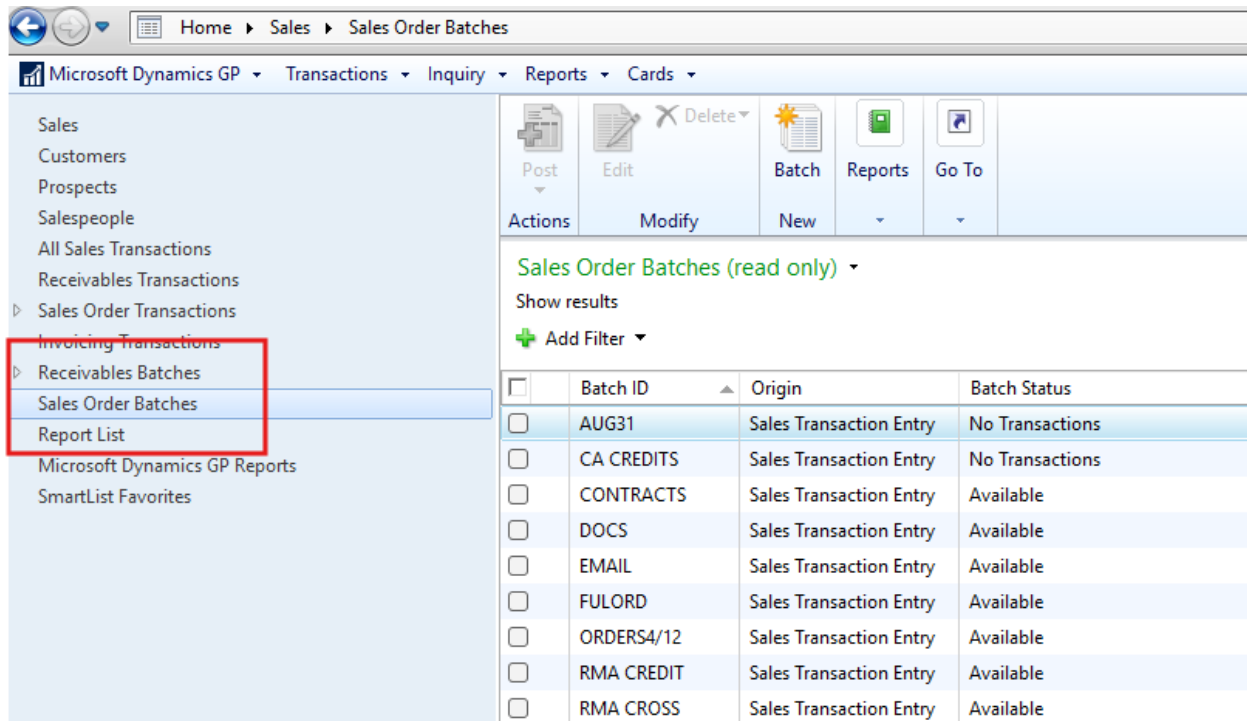
Sales Order Batches Navigation List

Navigation Lists are a powerful yet often underutilized feature in Dynamics GP that allow users to view, filter, and act on records across various modules—all from a single screen.

Populated with relevant data like vendors, customers, transactions, and reports, they give users instant access to the information they need most. By using Navigation Lists, you reduce clicks, improve visibility, and accelerate decision-making. Whether you're troubleshooting, auditing, or managing daily tasks, Navigation Lists help you stay organized and efficient—making Dynamics GP work smarter for you.

[After countless requests](#), it's finally here—a Sales Order Batches Navigation List in Dynamics GP! This popular feature was missing for far too long, and users felt it. Now, with this powerful addition, you can instantly view, filter, and manage your sales order batches without digging through menus or running reports. It's all about speed, visibility, and control. If you're handling high volume sales or need quick access to batch-level data, this Navigation List is a must-have. It's not just a convenience—it's a productivity boost your team will thank you for.

From the Sales Homepage, Sales Order Batches



The screenshot shows the Microsoft Dynamics GP interface. The left sidebar contains a navigation menu with the following items: Sales, Customers, Prospects, Salespeople, All Sales Transactions, Receivables Transactions, Sales Order Transactions, Invoicing Transactions, Receivables Batches, Sales Order Batches (highlighted with a red box), Report List, Microsoft Dynamics GP Reports, and SmartList Favorites. The main area displays the 'Sales Order Batches (read only)' view. It includes a toolbar with buttons for Post, Edit, Delete, Batch, Reports, and Go To. Below the toolbar, there is a section for 'Show results' and an 'Add Filter' button. The main content is a table with the following columns: Batch ID, Origin, and Batch Status. The table contains the following data:

Batch ID	Origin	Batch Status
AUG31	Sales Transaction Entry	No Transactions
CA CREDITS	Sales Transaction Entry	No Transactions
CONTRACTS	Sales Transaction Entry	Available
DOCS	Sales Transaction Entry	Available
EMAIL	Sales Transaction Entry	Available
FULORD	Sales Transaction Entry	Available
ORDERS4/12	Sales Transaction Entry	Available
RMA CREDIT	Sales Transaction Entry	Available
RMA CROSS	Sales Transaction Entry	Available

Similar to other Navigation List functionality, we can modify the list and add other columns and create filters to narrow down what you are looking for.

Actions

Modify

New

Sales Order Batches Month

Show results

Add Filter

<input type="checkbox"/>	Batch ID	Origin	Batch Status	Actual Transactions	Actual Batch Total	Control Transactions	Control Batch Total	Approved	Approved User ID	Approved Date	Checkbook ID
<input type="checkbox"/>	AUG31	Sales Transaction Entry	No Transactions	0	\$0.00	0	\$0.00	No		0/0/0000	UPTOWN TR...
<input type="checkbox"/>	CA CREDITS	Sales Transaction Entry	No Transactions	0	\$0.00	0	\$0.00	No		0/0/0000	UPTOWN TR...
<input type="checkbox"/>	CONTRACTS	Sales Transaction Entry	Available	42	\$156,395.48	0	\$0.00	No		0/0/0000	UPTOWN TR...
<input type="checkbox"/>	DOCS	Sales Transaction Entry	Available	2	\$133,180.88	0	\$0.00	No		0/0/0000	UPTOWN TR...
<input type="checkbox"/>	EMAIL	Sales Transaction Entry	Available	5	\$104,759.80	0	\$0.00	No		0/0/0000	UPTOWN TR...
<input type="checkbox"/>	FULORD	Sales Transaction Entry	Available	9	\$8,016.85	0	\$0.00	No		0/0/0000	UPTOWN TR...
<input type="checkbox"/>	ORDERS4/12	Sales Transaction Entry	Available	3	\$3,185.20	0	\$0.00	No		0/0/0000	UPTOWN TR...
<input type="checkbox"/>	RMA CREDIT	Sales Transaction Entry	Available	2	\$2,935.01	0	\$0.00	No		0/0/0000	UPTOWN TR...
<input type="checkbox"/>	RMA CROSS	Sales Transaction Entry	Available	1	\$2,806.61	0	\$0.00	No		0/0/0000	UPTOWN TR...
<input type="checkbox"/>	RMA INVOICE	Sales Transaction Entry	No Transactions	0	\$0.00	0	\$0.00	No		0/0/0000	UPTOWN TR...
<input type="checkbox"/>	RMA REPLACE	Sales Transaction Entry	No Transactions	0	\$0.00	0	\$0.00	No		0/0/0000	UPTOWN TR...

You can also Post, Modify, Delete, Enter new batch or Print the Edit list for the batch.

As with other Navigation List you can Go To Excel with the information or view the transactions.

Microsoft Dynamics GP

Home > Sales > Sales Order Batches > Sales Order Batches Month

Microsoft Dynamics GP > Transactions > Inquiry > Reports > Cards

Sales
Customers
Prospects
Salespeople
All Sales Transactions
Receivables Transactions
Sales Order Transactions
Invoicing Transactions
Receivables Batches
Receivables Batches Not Submitted
Receivables Batches Pending Approval
Sales Order Batches
Sales Order Batches Month
Report List
Microsoft Dynamics GP Reports
SmartList Favorites

Actions: Post Edit Batch Reports Go To

Sales Order Batches Month - Type to filter

Show results

Add Filter

Print This List
Print Edit List
Print Batch List

5/5/2025: Print Batch List action completed. 1 succeeded, 0 failed.

<input type="checkbox"/>	Batch ID	Origin	Batch Status	Actual Transactions	Actual Batch Total	Control Transactions
<input type="checkbox"/>	AUG31	Sales Transaction Entry	No Transactions	0	\$0.00	
<input type="checkbox"/>	CA CREDITS	Sales Transaction Entry	No Transactions	0	\$0.00	
<input checked="" type="checkbox"/>	CONTRACTS	Sales Transaction Entry	Available	42	\$156,395.48	
<input type="checkbox"/>	DOCS	Sales Transaction Entry	Available	2	\$133,180.88	
<input type="checkbox"/>	EMAIL	Sales Transaction Entry	Available	5	\$104,759.80	
<input type="checkbox"/>	FULORD	Sales Transaction Entry	Available	9	\$8,016.85	

VAT Enhancements to Submission process

If you submit [VAT information to HMRC using Dynamics GP Making Tax Digital](#), upgrading to version 18.8 is essential. This version includes critical updates that align with HMRC's latest submission protocols and ensures secure handling of sensitive financial data. The new process strengthens protection for stored secrets and credentials, helping you stay compliant and safeguard your organization's information.

HMRC regularly updates its digital submission requirements. Version 18.8 ensures your system meets these standards, avoiding potential rejections or penalties. The upgraded process includes improvements in how secrets (like authentication tokens or credentials) are stored and transmitted, reducing the risk of data breaches or unauthorized access. Without this upgrade over the course of time, users may encounter errors or be unable to submit VAT returns at all.

You can choose Tools and then click Routines, choose Company and Vat Return.

VAT Return - TWO (sa)	
VAT Report ID	666
Description	abc
Year	2017
Start Date	1/1/2017
End Date	3/31/2017
Due Date	5/7/2017
Submission Number	000002
Obligation Status	Open
Received Date	0/0/0000
<input checked="" type="checkbox"/> Final Return	
VAT due in this period on sales and other outputs:	\$99,990.00
VAT due in the period on acquisitions of goods made in Northern Ireland from EU Member States:	\$0.99
Total VAT due:	\$99,990.99
VAT reclaimed in the period on purchases and other inputs (including acquisitions in Northern Ireland from EU member states):	\$0.00
Net VAT to be paid to Customs or reclaimed:	\$99,990.99
Total value of sales and all other outputs:	\$0.00
Total value of purchases and all other inputs:	\$0.00
Total value of dispatches of goods and related costs (excluding VAT) from Northern Ireland to EU Member States:	\$0.00
Total value of acquisitions of goods and related costs (excluding VAT) made in Northern Ireland from EU Member States:	\$0.00
E-mail Options	



Note: While there are no visible changes to the Dynamics GP interface, important behind-the-scenes updates have been made in the code to support the latest HMRC submission process. These updates enhance system security, improve handling of sensitive data, and ensure continued compliance with HMRC requirements.

Summary of all Table Changes in 18.8

New Dynamics / System Table

FA03600 - FA_Luxury_Depreciation - Stores and saves Luxury Depreciation limits by year.

Quality fixes in 18.8

Distribution

- When you try to receive a purchase order that had line items linked with a cost category that is an inventory type, after the items are received the distribution account for the contra account is missing.
- You may notice in the Purchase Requisition Entry window, the scrolling window was missing a check for required function.

Financials

You may receive the following error A get/change operation on table 'PM_Transaction_WORK' could not find a record, when trying to drill down on a posted transaction.

Payroll

Reprint Payroll Checks causing the Payee name on all voids in Safe Pay to show up as the last employee in the pay run.

System/Install/Upgrade

TLS 1.3, .NET 4.7.2, Visual Studio 2019

Workflow

- You may notice that deleted attachments still e-mailed from Workflow.
- You may receive an error message 'This record has been deleted since you opened this window' when you click Workflow history button.